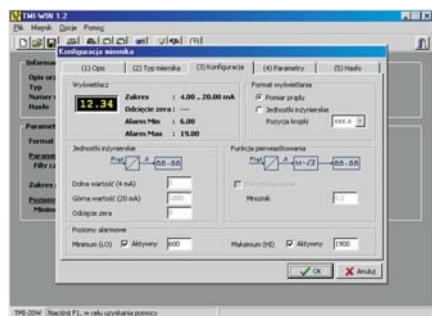
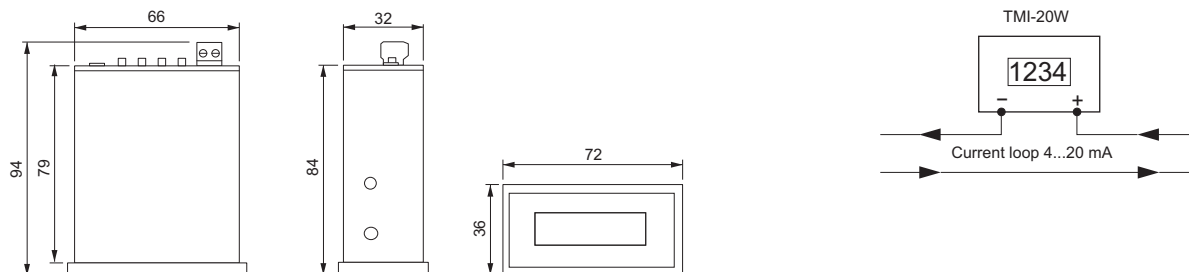


- All parameters programmable (span, filtering, alarms, square root, zero cut).
- Self powered from current loop.
- Value range -999...9999.
- Display current or scalable process value.
- Alarm indication.
- High reliability and accuracy.
- 9mm LCD display.
- Programming by PC or built-in keyboard.
- Panel mounted IP65 housing.



The TMI-20W is dedicated for local readout of 4...20 mA current signal scaled in process value. There is also possibility to readout direct current value. A device is self powered from the current loop. Advanced math function like square root allows TMI-20W to be used in a flow control systems as local readout of the flow. All parameter of the device are easy programmable by internal keyboard (rear panel) or by software TMI-WIN. Dust protection IP65 (front) allows to use TMI-20W at heavy environment.



TMI-WIN is a software dedicated for easy configuration of the device. It runs on PC computer and requires Windows operating system.

Features of the software:

- easy menu,
- read current configuration of a device,
- read/write configuration setting from/to a file,
- configuration printout,
- password (optional) against any changes,
- input signal simulation (monitor mode),
- data logging to a file in the CSV format (easy import into MS Excel),
- graphical chart logged data,
- chart printout.

Order TMI-20W using the following code:

TMI - 20W

Input

■ input span	3.6...22mA
■ input voltage drop	≤ 6V
■ overload protection	26 ± 2mA

Display

■ type	LCD 4 digits
■ digit high	9mm
■ value range	-999...9999
■ dot position	programmable

General data

■ basic accuracy	≤ 0.1% ± 2 digits
■ measurement resolution	10 bits
■ response time (10...90%)	≤ 1s
■ warm up time	15min

Temperature

■ operating temperature	0...60°C
■ temperature influence	≤ 0.01%/°C

Environment conditions

■ storage temperature	-10...65°C
■ humidity (non-condensing)	≤ 90%
■ working position	any

Housing

■ material	molded ABS
■ protection housing front / rear	IP65 / IP10
■ cut-out dimensions	68.5 x 32mm
■ wire connections	plug with screw terminals 1.5mm ²
■ dimensions	see drawings on the first page
■ weight	~ 150g

Programming accessories:

1. Configuration software TMI-WIN.
TMI-WIN allows for configuration of a device. The newest version may be downloaded from www.ssa.pl.
Software is free of charge.
2. Converter RS232/TTL.
Converter is used for communication between PC and devices like SMS and TMI.

