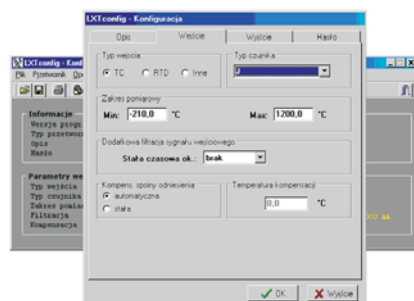
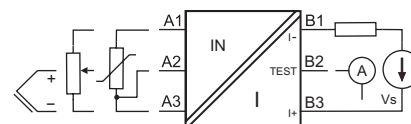
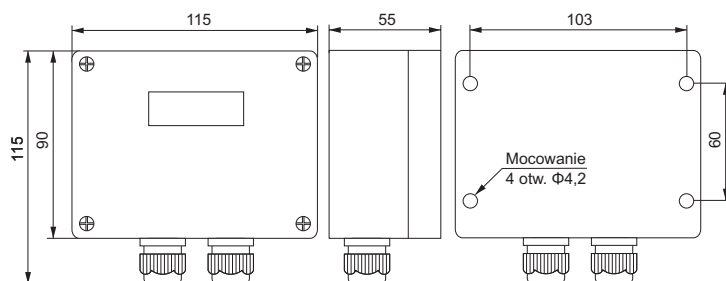


- All parameters programmable.
- Resistance input - Pt100, Ni100, Cu100, Pt1000, Ω , potentiometer.
- Voltage input - B, J, K, N, R, S, mV
- Current output 4...20 mA (current loop).
- Galvanic separation input/output.
- Sensor break signalization.
- All sensors linearization.
- High reliability and accuracy.
- Large 13 mm LCD display.
- Wall mounted IP65 housing.
- Special versions on request.



The SXT-811 transducer converts temperature from an input sensor to the output current signal 4...20mA. A device works as a current loop regulator with galvanic separation between an input sensor and the output. The SXT-811 is self powered from the current loop. A device assures cold junction compensation (if thermocouple is connected as input signal) or it makes input wire resistance compensation (if resistive element is connected). LXtconfig software is dedicated for setting sensor type, measurement range, sensor break signalization, fine calibration and it allows to define custom sensor characteristic. There is possibility to deliver device for non-standard signals on demand.



LXtconfig is a software dedicated for easy configuration of the device. It runs on PC computer and requires Windows operating system.

Features of the software:

- easy menu,
- read current configuration of a device,
- read/write configuration setting from/to a file,
- configuration printout,
- password (optional) against any changes,
- input signal simulation (monitor mode),
- data logging to a file in the CSV format (easy import into MS Excel),
- graphical chart logged data,
- chart printout.

Order SXT-811 using the following code:

SXT - 811

Input

■ Pt100, Ni100, Cu100, Pt1000 resistance, potentiometer	0...1600Ω
■ J, K, N, S, R, B, voltage sensor current	-35...150mV ~ 0.35mA
■ input line resistance	≤ 10Ω/wire
■ input line resistance variation influence	≤ 0.005%/Ω
■ voltage source internal resistance	≤ 1kΩ
■ voltage source internal resistance variation infl.	≤ 0.1%/kΩ

Output

■ output signal	4...20mA
■ permissible load resistance (RI)	see load diagram
■ load variation influence	≤ 0.03%
■ sensor break indication	3.7...22 mA

Display

■ type / digit height / value range	LCD 4 digits / 13 mm / -999...9999
-------------------------------------	------------------------------------

General data

■ basic accuracy (larger value)	≤ 0.1%
- resistance input / accuracy (range) /	0.1Ω (200Ω); 0.13Ω (400Ω); 0.16Ω (800Ω); 0.2Ω (1600Ω)
- voltage input / accuracy (range) /	10μV (35mV); 13μV (75mV); 16μV (150mV)
■ response time (10...90%)	≤ 1 s
■ cold junction compensation (CJC)	≤ 0.5°C
■ galvanic separation (test)	1.5kV AC, 50Hz, 1min
■ warm up time	15min

Power supply

■ supply voltage (Vs)	10...30V DC
■ supply voltage variation influence	≤ 0.03%
■ permissible ripple	≤ 4V _{pp} , 50Hz

Temperature

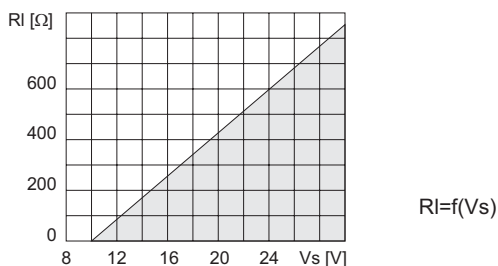
■ operating temperature	0...60°C
■ temperature influence	≤ 0.01%/°C
■ temperature influence for CJC	≤ 0.1%/°C

Environment conditions

■ storage temperature	-10...70°C
■ humidity (non-condensing)	≤ 90%

Housing

■ material	molded ABS
■ protection housing / glands	IP65 / PG9
■ wire connections	screw terminals 1.5mm ²
■ weight	~ 350g

Diagrams

Programming accessories:

1. Configuration software LXTconfig.
LXTconfig allows for configuration and calibration of a device. The newest version may be downloaded from www.ssa.pl. Software is free of charge.
2. Converter RS232/LXT.
Converter is used for communication between PC and devices like LXT and SXT.

